



Civil & Road Works Case Study: Cardinal Street, Mosman

Client: Mossman Council

We are proud to present the successful completion of a critical road safety improvement project that has transformed Cardinal Street in Mosman. This achievement represents a strategic investment in community safety, pedestrian protection, and traffic management excellence. Working in close partnership with Mosman Council, we delivered a complex project that enhances safety for school children, improves traffic flow, and creates a lasting legacy for local residents and the broader Mosman community.

Cardinal Street serves as a vital connector in Mosman's road network, with significant daily traffic including school drop-offs, commuters, and local residents. The council identified urgent safety concerns requiring comprehensive traffic calming measures, pedestrian refuge islands, and road surface improvements. Our expert team was selected to deliver these critical upgrades through strategically scheduled works during the January 2026 school holiday period, ensuring zero disruption to school operations whilst maximising construction efficiency and quality outcomes.

Before



Cardinal Street prior to safety improvements

After



Completed safety infrastructure with refuge islands and traffic calming

Project Scope & Deliverables

This comprehensive project addressed critical road safety infrastructure through precision engineering and quality construction, exceeding Mosman Council's expectations and establishing new benchmarks for road safety projects.

262 m²

Road resurfacing completed

Premium asphalt wearing course installed — delivering smooth, durable surface for years of reliable service

2 Islands

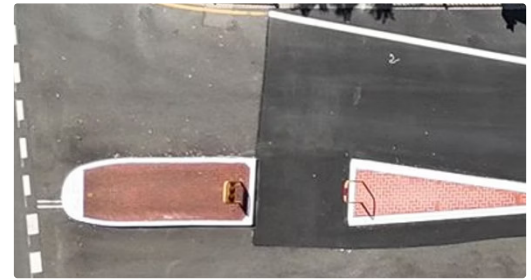
Concrete refuge islands built

Strategically positioned pedestrian safety refuges with modern Dragon Teeth markings for enhanced visibility and protection

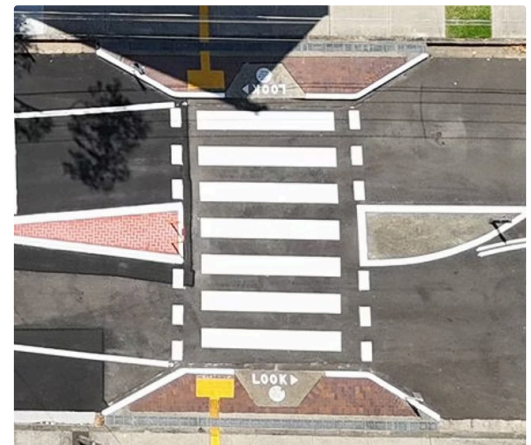
38 Metres

Median strip & safety fencing

New concrete median with 38m of pedestrian safety fencing installed, creating protected crossing zones



Beyond the major infrastructure works, our comprehensive approach included complete line marking renewal with modern Dragon Teeth traffic calming treatments, ensuring maximum visibility and driver awareness.



01

Quality Assurance Excellence

All works completed with hold point inspections and council approvals at critical stages, ensuring full compliance with AS 4905 and TfNSW standards

02

Strategic Timing

9-day construction program delivered during January school holidays, eliminating disruption to nearby schools and minimising impact on daily commuter traffic

03

Traffic Management

Comprehensive traffic control systems maintained safe access for residents and through-traffic throughout all construction phases

Community Impact & Safety Excellence

The quantifiable metrics represent only one dimension of our success — the genuine impact is experienced daily by families, school children, and residents who benefit from dramatically improved road safety. Our commitment to zero-harm safety culture and quality excellence has created lasting benefits that extend far beyond the immediate project boundaries.



Community Safety Benefits

School children and families now benefit from dedicated pedestrian refuge islands and protected crossing points. The new median strip and Dragon Teeth markings have significantly reduced vehicle speeds, creating a safer environment for the hundreds of residents who use this street daily.



Zero Incident Achievement

We achieved zero safety incidents and zero Lost Time Injuries throughout the entire project delivery period, reflecting our unwavering commitment to protecting workers, residents, and road users. Our safety-first culture ensured every team member returned home safely each day.



Standards Compliance

Full compliance with AS 4905 Minor Civil Works standards and TfNSW Road Specifications achieved through rigorous quality control, hold point inspections, and council verification at all critical construction stages.

Enhanced pedestrian safety infrastructure with modern traffic calming treatments has transformed Cardinal Street into a safer, more accessible route for the entire Mosman community, particularly benefiting families with young children and elderly residents.

Partnership Success & Lasting Legacy



Future-Focused Investment

The Cardinal Street safety upgrade represents far more than road resurfacing — it establishes a robust foundation for safer school journeys, protected pedestrian crossings, and enduring infrastructure value that will benefit the Mosman community for decades to come. For years ahead, these safety improvements will protect thousands of pedestrians and road users daily, standing as a proud testament to the transformative results achievable through strategic council investment and exceptional contractor capability.

Collaborative Excellence

The strategic implementation of works during the January 2026 school holiday period presented unique scheduling challenges, but our close coordination with Mosman Council, local schools, and community residents ensured outstanding success. Through comprehensive advance notifications, meticulous traffic planning, and proactive stakeholder engagement, we achieved zero disruption to school operations whilst delivering a project completed precisely on schedule and exceeding all technical specifications.

✔ **This project exemplifies what can be accomplished when council, community, and contractor unite with shared vision:** durable, safe infrastructure that creates genuine, measurable improvements to daily life whilst establishing new benchmarks for road safety construction excellence in the Mosman region.

A lasting legacy of community-focused road safety excellence, delivered through partnership and precision.

 **High End (Aust) Pty Ltd** | ABN: 65 641 308 205

15 Fortril Ave Bankstown NSW 2200

 www.highendcivil.com.au |  admin@highendcivil.com.au |  02 9570 2500